

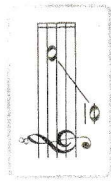
アルトリコーダーで吹いたときの指遣いを答えなさい。

(  $\emptyset$  1 2 3 ) (  $\times$  1 2 3 5 ) (  $\times$  1 2 3 4 5 )

虹の彼方に  
にじからた

H. アーレン作曲

$\text{♩} = 40 \sim 44$



Musical notation for the first staff, showing a treble clef, a 3/4 time signature, and a sequence of notes: quarter note G4, quarter note A4, quarter note B4, quarter note C5, quarter note B4, quarter note A4, quarter note G4. A circled note on the second line (F4) is connected to the first part of the answer.

Musical notation for the second staff, showing a treble clef, a 3/4 time signature, and a sequence of notes: quarter note G4, quarter note A4, quarter note B4, quarter note C5, quarter note B4, quarter note A4, quarter note G4. A circled note on the second line (F4) is connected to the second part of the answer.

$\frac{2}{2}$  を 1 拍に数える 2 拍子 口絵 7

( 0 1 2 3 4 5 ) ( 0 1 2 3 5 6 )